

CERTAIN 2021-2023 MODEL YEAR F-150 VEHICLES EQUIPPED WITH 9.75" HD AXLE – 3/4 FLOAT AXLE — REAR AXLE HALF-SHAFT AND HUB ASSEMBLY REPLACEMENT

NOTE: This is an interim repair and will not close the Field Service Action (FSA).

NOTE: If you do not have the special tools referenced in the Workshop Manual (WSM) to perform the FSA repair, please contact 1-800 ROTUNDA and choose option 3 to place an order.

NOTE: Due to a limited supply of service parts at this time, dealers are authorized to repair affected F-150 vehicles identified in OASIS that are brought to your dealership and **currently have a loose or fractured rear axle bolt**.

F-150 vehicles identified in OASIS that do **NOT** have a loose or fractured rear axle bolt will be eligible for repair at a future date.

SERVICE PROCEDURE

1. Position the vehicle on a hoist. Follow the Workshop Manual (WSM) procedures in Section 100-02.
2. On both sides, remove the rear tire to prevent any possible scratching. Follow the WSM procedures in Section 204-04A.
3. On both sides, locate the rear wheel end hub bolt. See Figure 1.

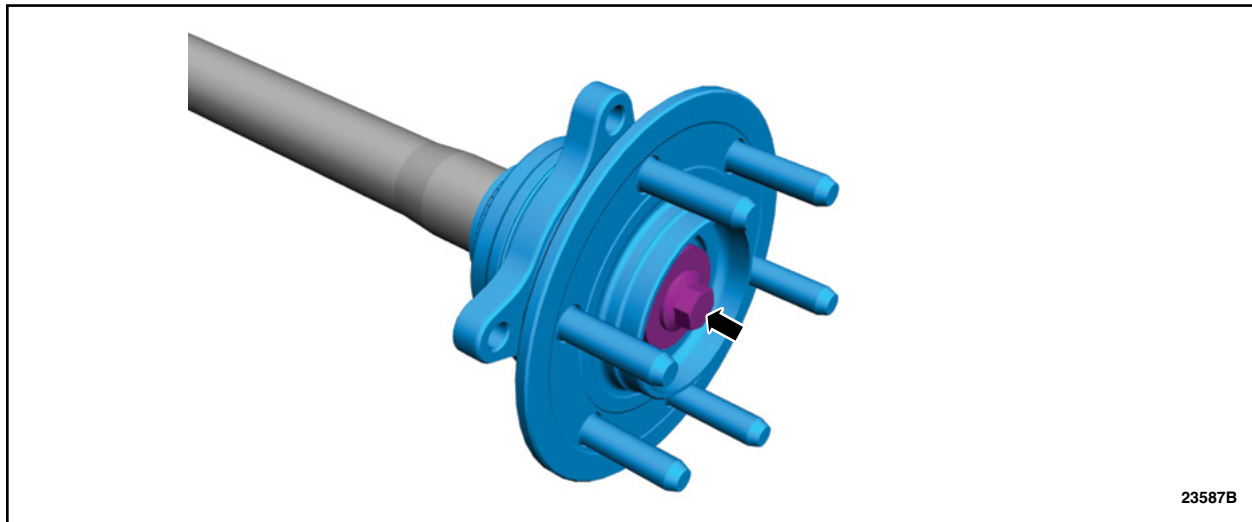


FIGURE 1



4. On both sides, inspect the rear wheel end hub bolt. Is the wheel end hub bolt loose or broken on either side? See Figures 2 and 3.

No – Passes inspection. Reinstall the rear tires per WSM Section 204-04A. This program will remain open until parts are available to complete the program.

Yes – Does not pass inspection. Capture a clear photo of the loose or broken wheel end hub bolt and submit the photo to the Special Service Support Center (SSSC). Then, proceed to Step 5.

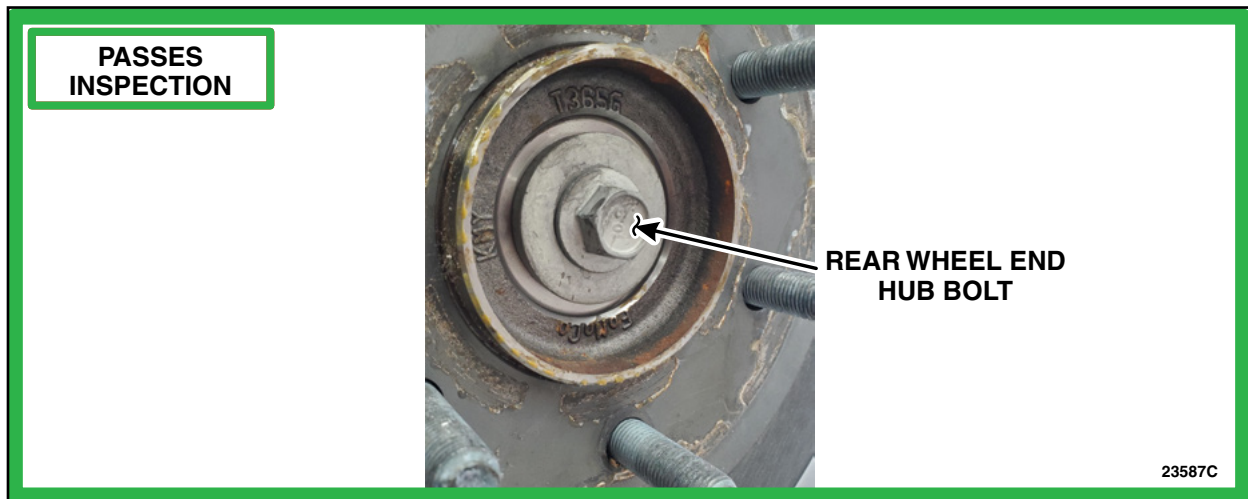


FIGURE 2

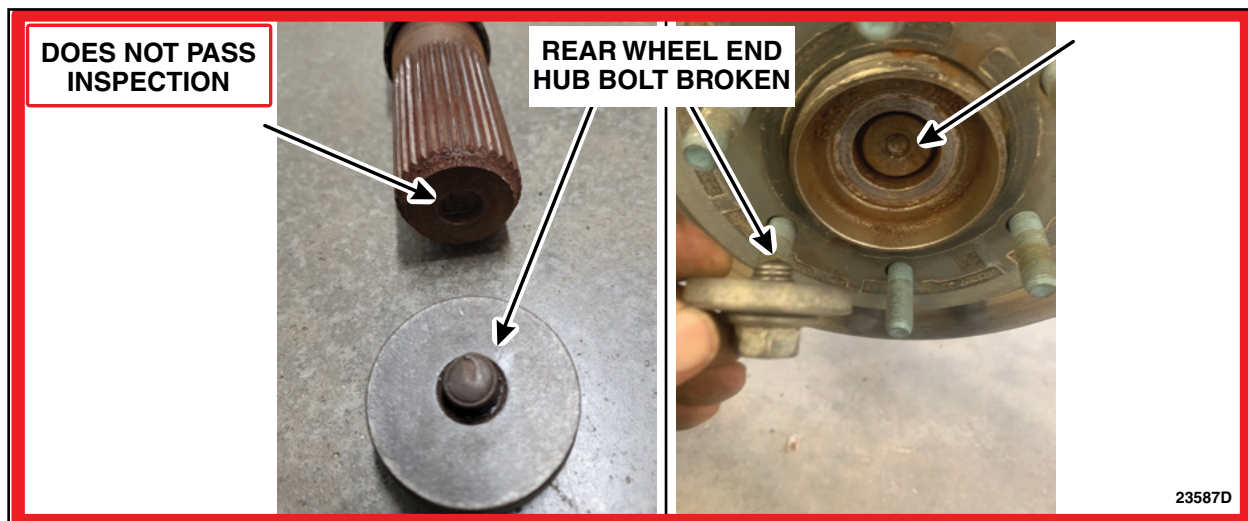


FIGURE 3

5. Contact the SSSC. Once verbal approval has been given, replace the axle shaft on **BOTH** sides, even if only one side is loose or broken. Follow the WSM procedures in Section 205-02B.

NOTE: The Anchor Plate bolt is a M18, torque each bolt to 258 lb ft (350 Nm).

6. Reinstall the rear tires. Follow the WSM procedures in Section 204-04A.

